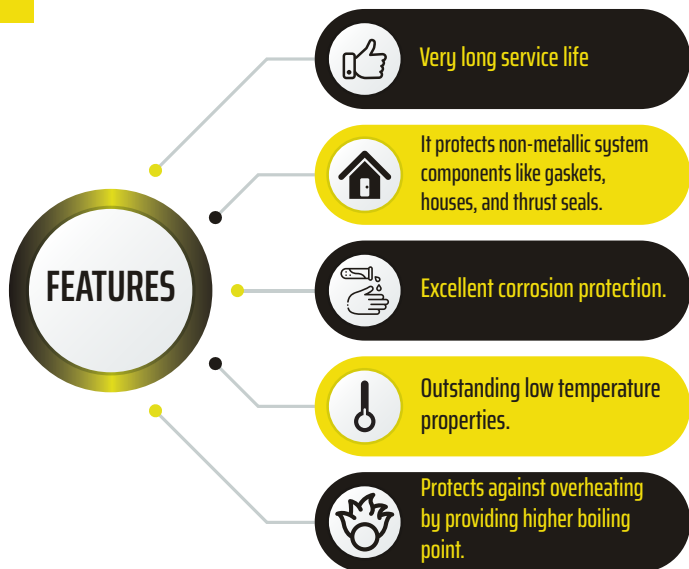


SHIELD POLAR COOL

DESCRIPTION

Shield's Polar Cool is an all-year-round anti-freeze engine coolant for radiators of modern automotive vehicles. It is specially formulated with Ethylene-Glycol and a corrosion inhibitor, and is dyed fluorescent green for ready identification.



PERFORMANCE LEVELS:

- BS 6580
- JIS K-2234

APPLICATIONS:

Shield Polar Cool is recommended for use in all passenger vehicles and/or radiators including small and large cars, trucks, heavy-duty equipment, buses and specialty engines where an anti-freeze coolant is required.

TYPICAL PHYSICAL PROPERTIES

SL#	Characteristics Unit	Test Method	COOLANT 30%	COOLANT 50%	COOLANT 100%
1	Density @ 15°C	ASTM D 1298	1.0500	1.0500	1.1300
2	pH		8.2	8.2	8.5
3	Freezing point, °C		-18	-40	-13
4	Color	ASTM D 1500	Green	Green	Green
5	Appearance	ASTM D 4176	C&B	C&B	C&B

* Exact specifications may slightly vary from the above, but within the international standards.