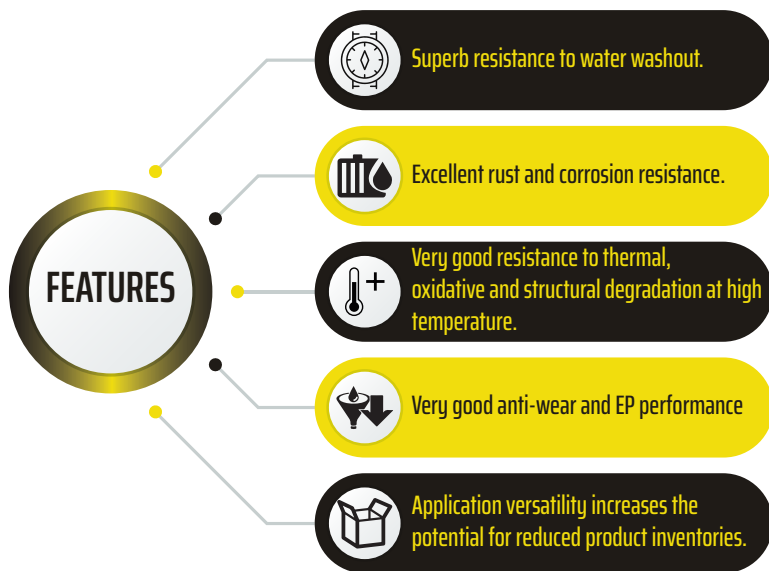




SHIELD - EXTREME PRESSURE LITHIUM GREASE

DESCRIPTION

The Shield Extreme-Pressure (EP) Lithium Grease is a top quality Lithium soap grease with extreme pressure additives suitable for lubricating all types of mechanical equipments found in the automotive and commercial industries. It is produced by using premium quality virgin base oils. It has excellent resistance to oxidation and high shear stability and good resistance to water washing operating temperature is up to 125°C.



PERFORMANCE LEVELS:

- GREASE-US NLGI-LB EXTREME PRESSURE (EP)

APPLICATIONS:

Shield's Extreme-Pressure Lithium Grease is suitable for plain bearings working under wet conditions. It is also used for plant lubrication and industrial operations where heavy or shock loads are present, and all other grease points for equipment operating under high load conditions.

TYPICAL PHYSICAL PROPERTIES				
	Grease Type	EP1	EP2	EP3
SL#	NLGI Grade	NLGI-1	NLGI-2	NLGI-3
1	Color	Dark Brown	Dark Brown	Dark Brown
2	Penetration, Worked @ 25 °C	330	280	245
3	Texture	Smooth	Smooth	Smooth
4	Dropping Point, °C	204	204	204
5	4 Ball, Weld Load, kg	200	280	280
6	Timken OK Load, lbs	40	55	55

* Exact specifications may slightly vary from the above, but within the international standards